

# THE LEGACY

· LIVE · WORK · PLAY ·

## THE LOFT OFFICES AT THE LEGACY

**VALCOR**

**Jared Davis**

jared@valcorcre.com \ 830.431.2636

**Jonathan Collins, CCIM**

jonathan@valcorcre.com \ 210.446.4741



THE  
**LEGACY**  
· LIVE · WORK · PLAY ·

One of the highest trafficked  
areas in San Antonio

Highway 281 and Loop 1604  
intersection accommodates  
around 300,000  
vehicles each day.



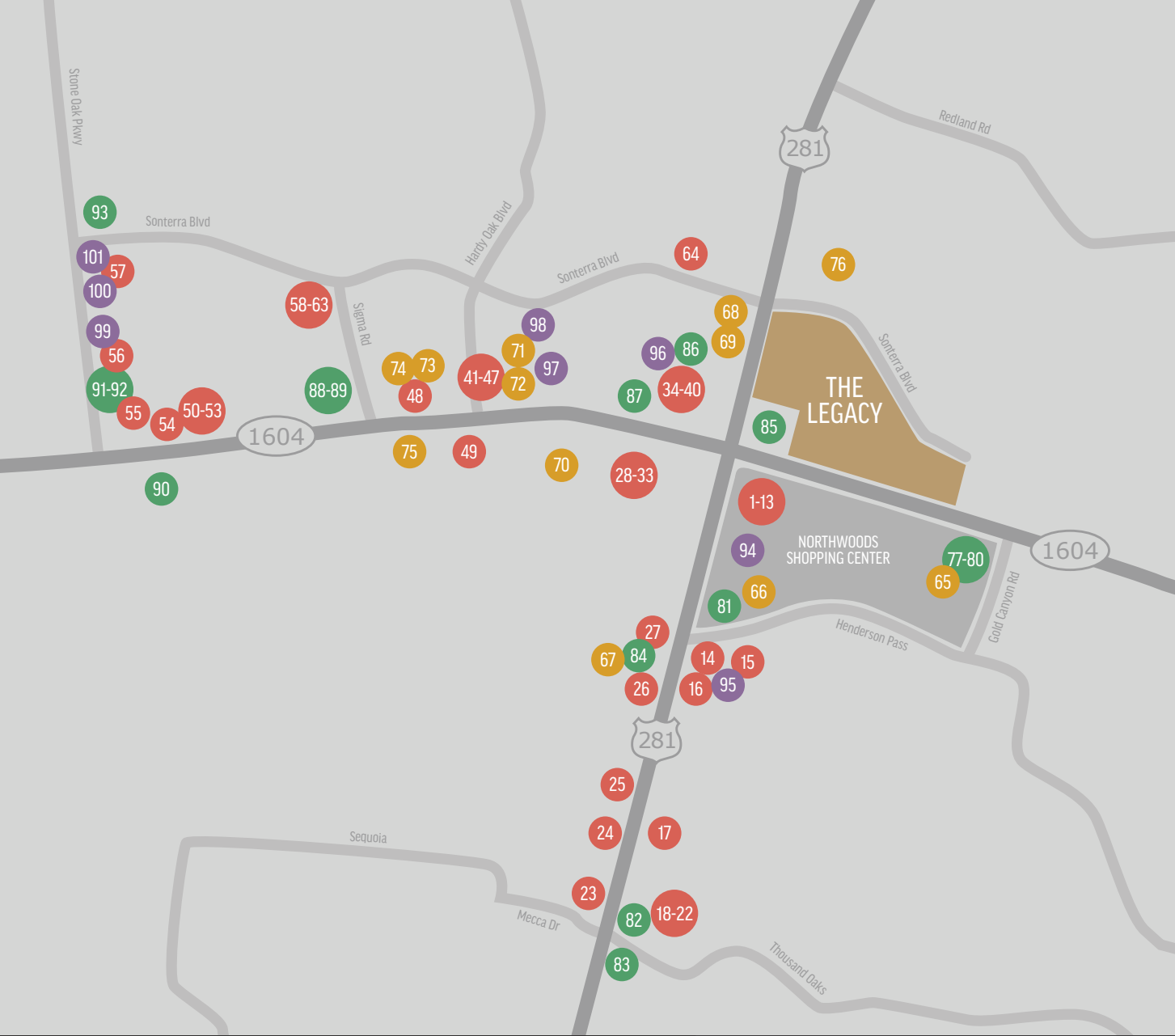
THE  
**LEGACY**

· LIVE · WORK · PLAY ·

Jonathan Collins, CCIM  
jonathan@valcorcre.com \ 210.446.4741

Jared Davis  
jared@valcorcre.com \ 830.431.2636

**VALCOR**



**DINING**

- |                                |                            |                         |
|--------------------------------|----------------------------|-------------------------|
| 1. Subway                      | 23. Chester's Hamburgers   | 45. Dona Tota           |
| 2. Red Robin                   | 24. Texas Roadhouse        | 46. Munchies            |
| 3. Cold Stone                  | 25. Walk-On's Bistreaux    | 47. Rise Bakery         |
| 4. Pei Wei                     | 26. China Harbor           | 48. WOW Cafe Kitchen    |
| 5. Firehouse Subs              | 27. Red Lobster            | 49. The Hoppy Monk      |
| 6. Stout's Pizza               | 28. Laguna Madre           | 50. Kirby's Steakhouse  |
| 7. Tilted Kilt Pub             | 29. Bill Miller Bar-B-Q    | 51. River City Seafood  |
| 8. Starbucks                   | 30. KFC                    | 52. Toro Kitchen + Bar  |
| 9. Fish City Grill             | 31. Taco Bell              | 53. Mellow Mushroom     |
| 10. Zio's Italian Kitchen      | 32. IHOP                   | 54. Sushi Zushi         |
| 11. Orange Leaf                | 33. Schlotzsky's Deli      | 55. Corner Bakery       |
| 12. La Madeleine               | 34. Las Palapas            | 56. Taipei              |
| 13. Chuy's                     | 35. Chick-fil-A            | 57. Luciano's Pizzeria  |
| 14. Chili's Grill & Bar        | 36. Whataburger            | 58. The Draft Station   |
| 15. Sizzling Wok               | 37. Sonic Drive-In         | 59. Kumori Sushi        |
| 16. Ray's Pizzeria             | 38. McDonald's             | 60. Jimmy John's        |
| 17. Saltgrass Steakhouse       | 39. Chuck E. Cheese's      | 61. Nothing Bundt Cakes |
| 18. The Egg & I                | 40. Five Guys              | 62. Salata Sonterra     |
| 19. Freddy's Frozen Custard    | 41. Jason's Deli           | 63. Local Coffee        |
| 20. Lemongrass Thai Restaurant | 42. Smoothie King          | 64. Perico's Restaurant |
| 21. Saweet Cupcakes            | 43. Krispy Kreme Doughnuts |                         |
| 22. John The Greek Restaurant  | 44. Brick House Tavern     |                         |

**LODGING**

- |                    |                            |                           |
|--------------------|----------------------------|---------------------------|
| 65. Hampton Inn    | 69. Best Western           | 73. Drury Plaza Hotel     |
| 66. Comfort Suites | 70. Fairfield Inn & Suites | 74. Drury Inn & Suites    |
| 67. Days Inn       | 71. Residence Inn          | 75. Staybridge Suites     |
| 68. Hyatt Place    | 72. La Quinta Inn & Suites | 76. Courtyard by Marriott |

**BANKING**

- |                            |                              |                             |
|----------------------------|------------------------------|-----------------------------|
| 77. BFCU                   | 83. Wells Fargo Bank         | 89. The Bank of San Antonio |
| 78. Firstmark Credit Union | 84. Commerce Bank            | 90. First United Bank       |
| 79. Farm Bureau Bank       | 85. Credit Human             | 91. IBC Bank                |
| 80. Wells Fargo Bank       | 86. Woodforest National Bank | 92. Frost Bank              |
| 81. BBVA Compass           | 87. Security Service         | 93. Jefferson Bank          |
| 82. Frost Bank             | 88. Benchmark Bank           |                             |

**GROCERY & PHARMACY**

- |                            |                      |                         |
|----------------------------|----------------------|-------------------------|
| 94. HEB                    | 97. Costco           | 100. Stone Oak Pharmacy |
| 95. Sprouts Farmers Market | 98. Sonterra RX      | 101. CVS Pharmacy       |
| 96. Walmart                | 99. Oakdell Pharmacy |                         |

**Desirable Office Location**

This development's prime location makes it a highly-desirable place for any business looking for a new office.

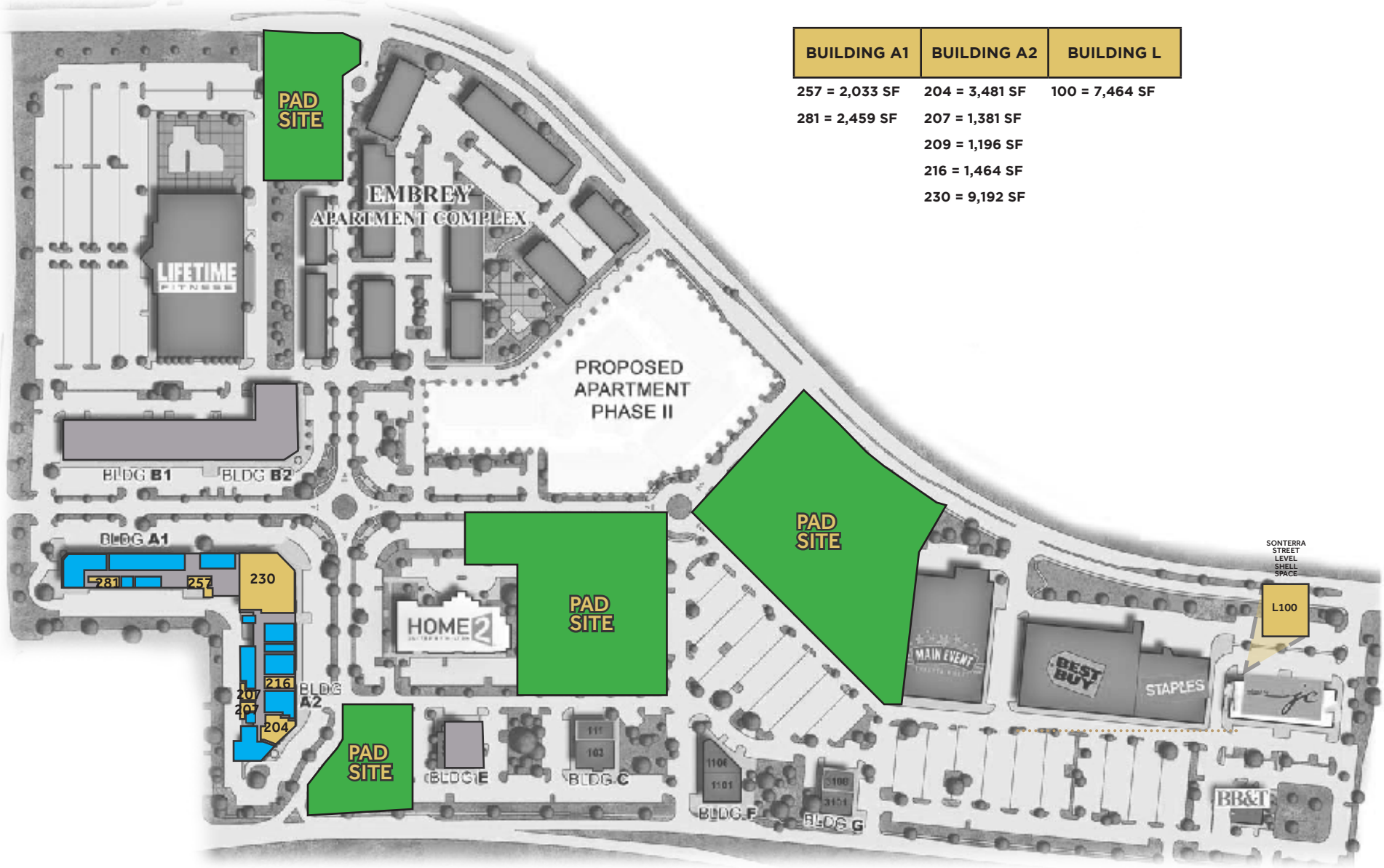
**Jonathan Collins, CCIM**  
jonathan@valcorcre.com \ \ 210.446.4741

**Jared Davis**  
jared@valcorcre.com \ \ 830.431.2636



BUILDING A1	BUILDING A2	BUILDING L
-------------	-------------	------------

257 = 2,033 SF	204 = 3,481 SF	100 = 7,464 SF
281 = 2,459 SF	207 = 1,381 SF	
	209 = 1,196 SF	
	216 = 1,464 SF	
	230 = 9,192 SF	



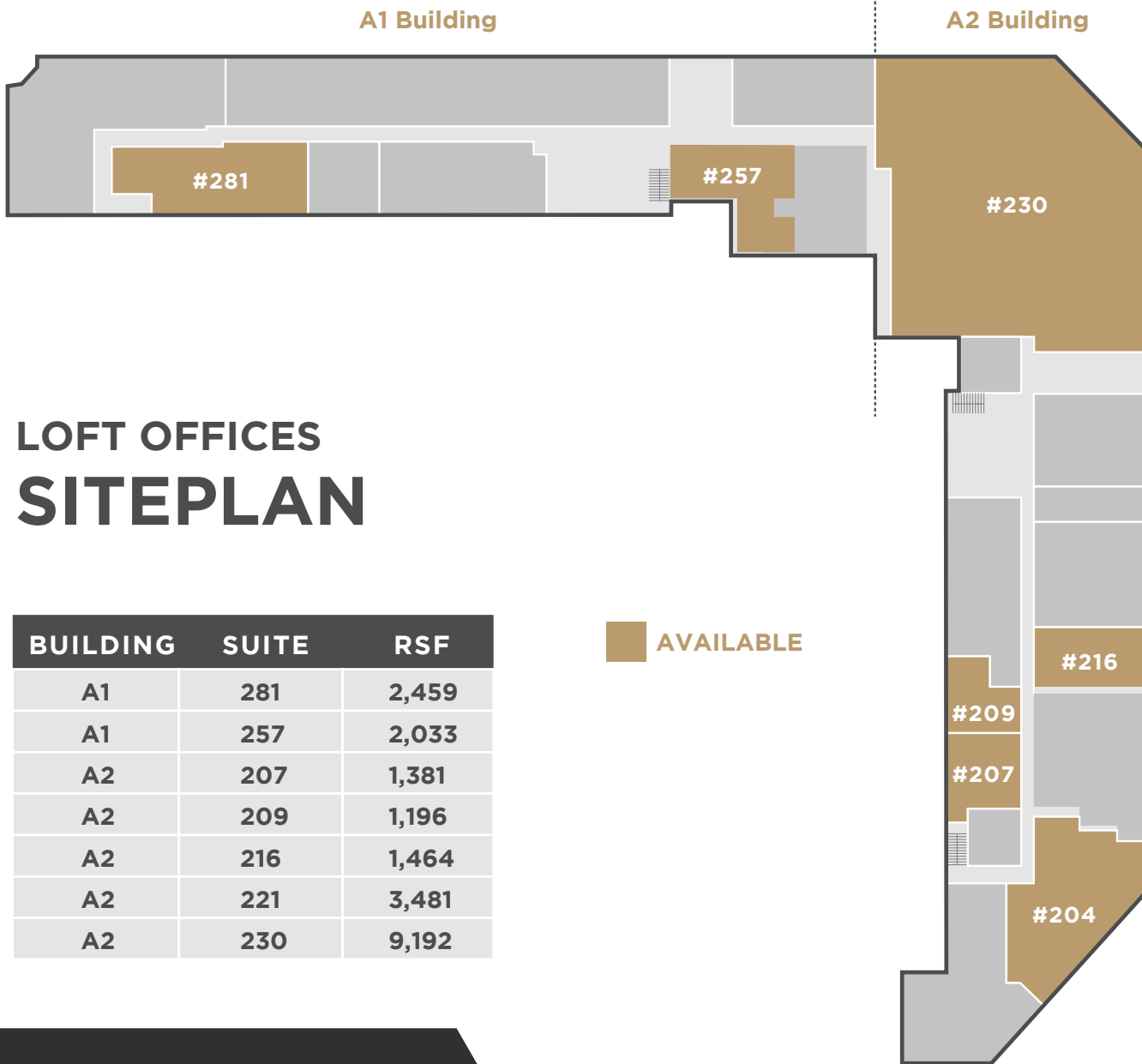
# THE LEGACY

· LIVE · WORK · PLAY ·

Jonathan Collins, CCIM  
 jonathan@valcorcre.com \ 210.446.4741

Jared Davis  
 jared@valcorcre.com \ 830.431.2636

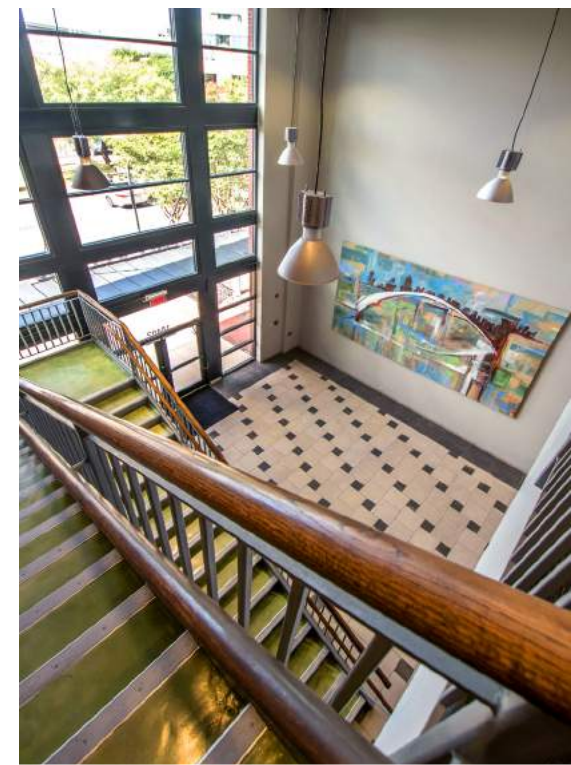
**VALCOR**



# LOFT OFFICES SITEPLAN

BUILDING	SUITE	RSF
A1	281	2,459
A1	257	2,033
A2	207	1,381
A2	209	1,196
A2	216	1,464
A2	221	3,481
A2	230	9,192

 AVAILABLE



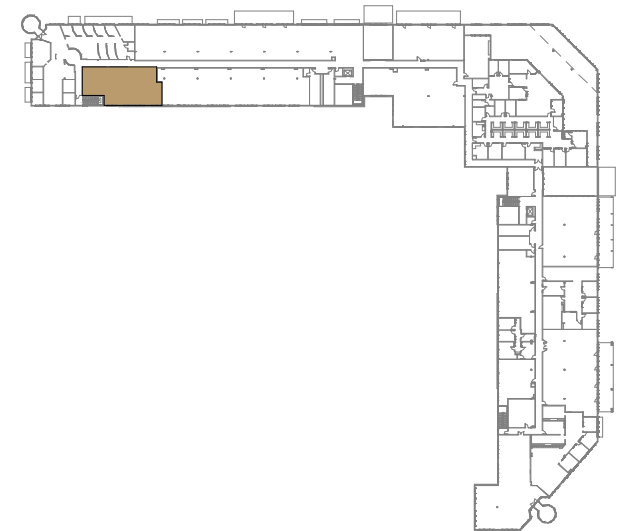
THE  
**LEGACY**

· LIVE · WORK · PLAY ·

Jonathan Collins, CCIM  
jonathan@valcorcre.com \ 210.446.4741

Jared Davis  
jared@valcorcre.com \ 830.431.2636

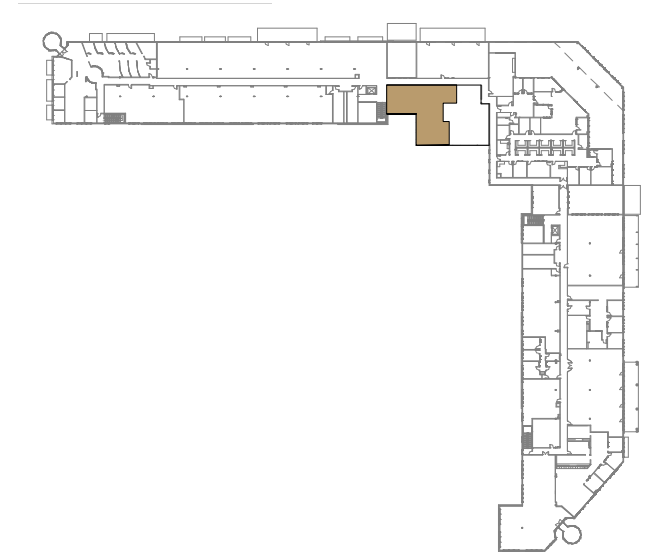
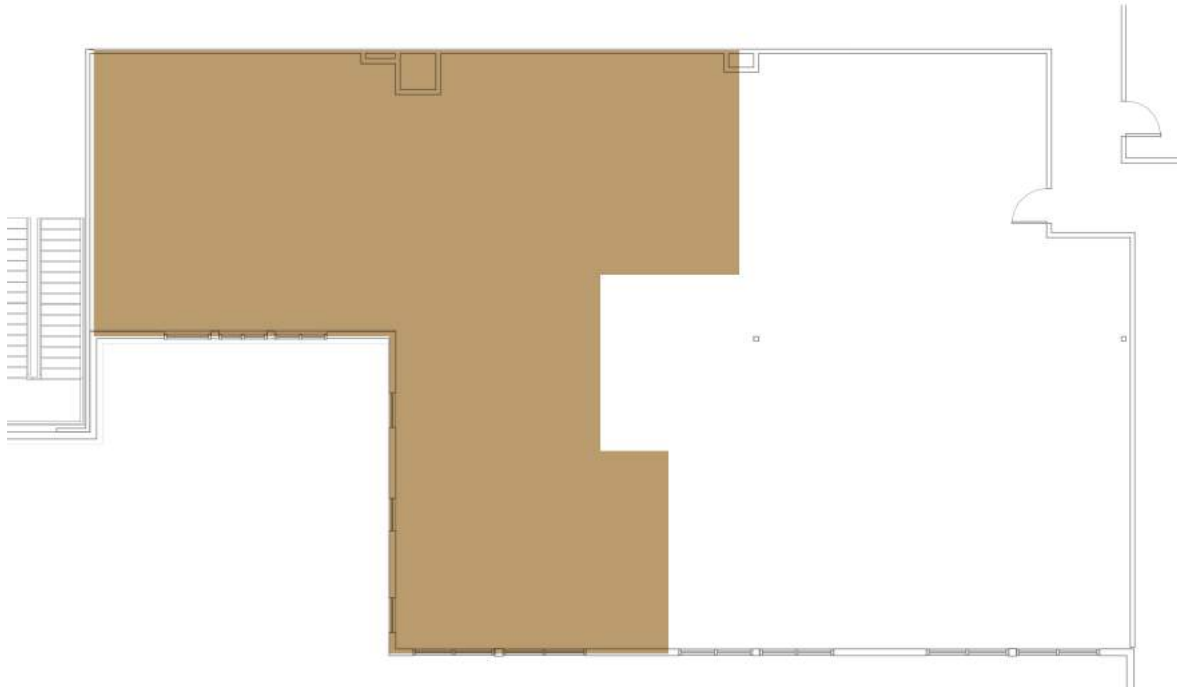
**VALCOR**



SUITE 257 \ \ A1 BLDG · 2,033 SQFT

THE  
**LEGACY**

· LIVE · WORK · PLAY ·



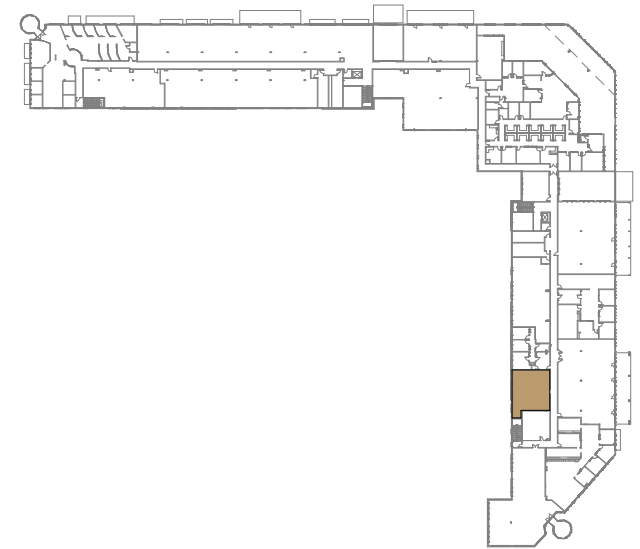
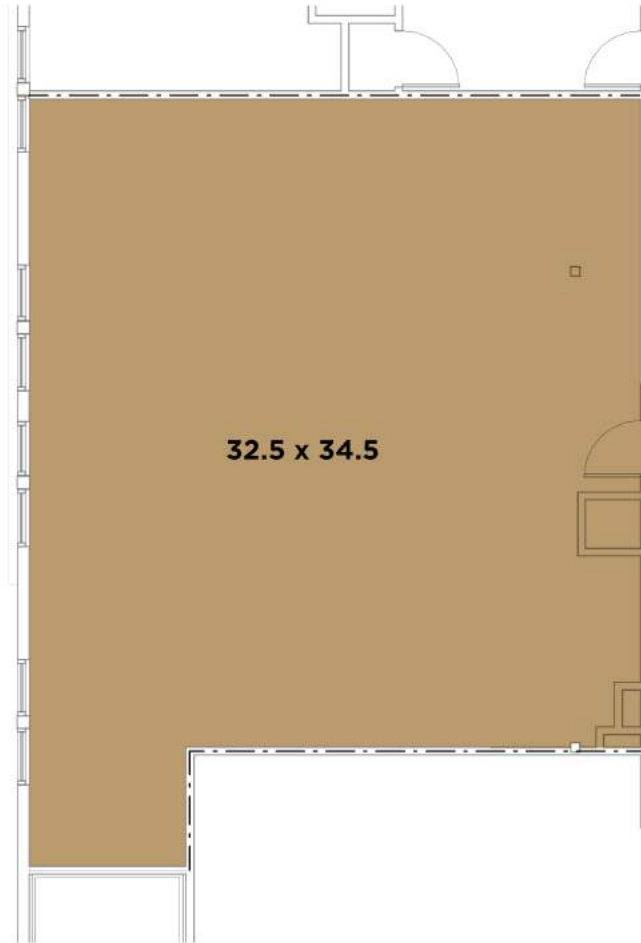
**VALCOR**

**Jared Davis**

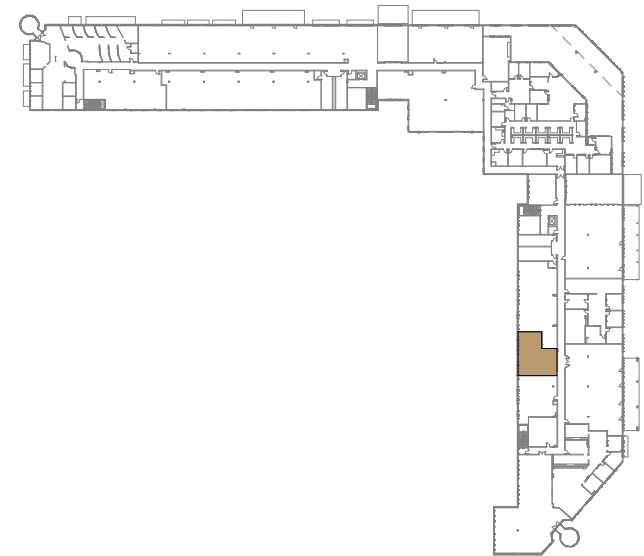
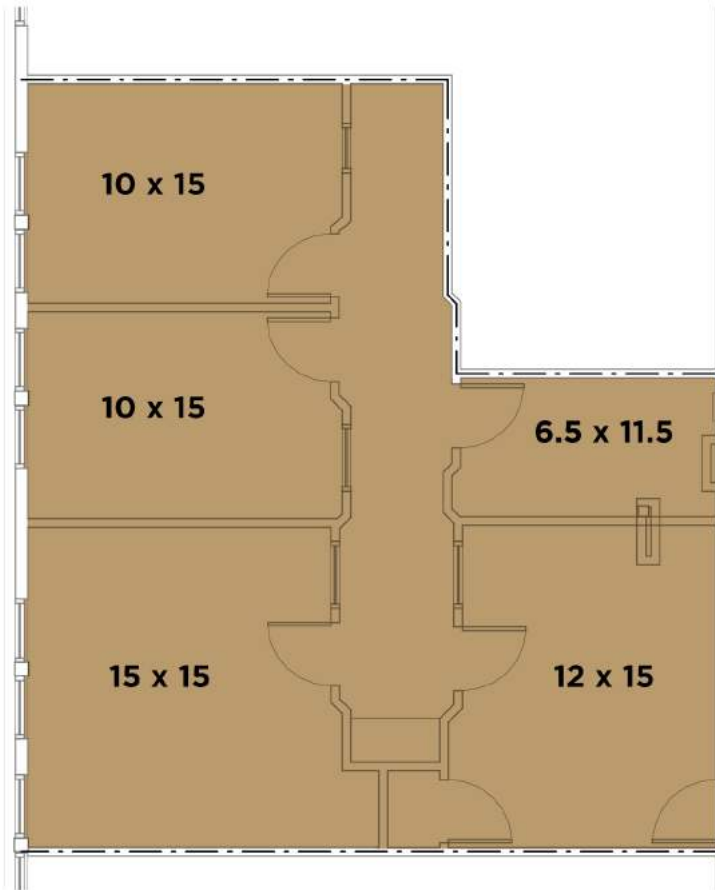
jared@valcorcre.com \ \ 830.431.2636

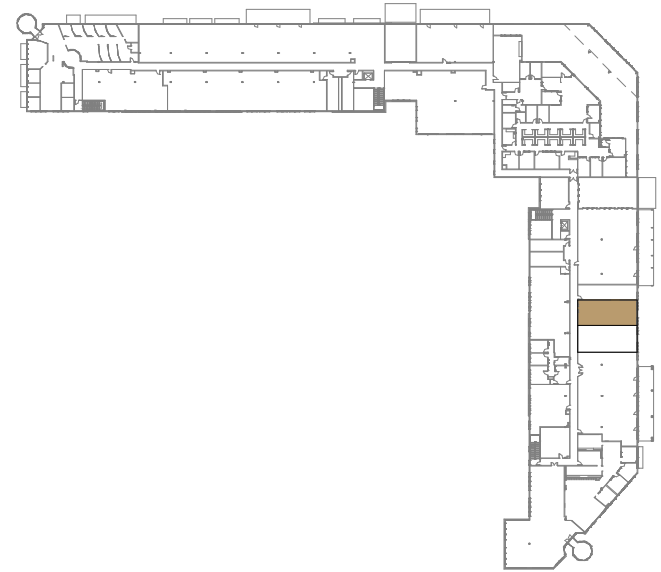
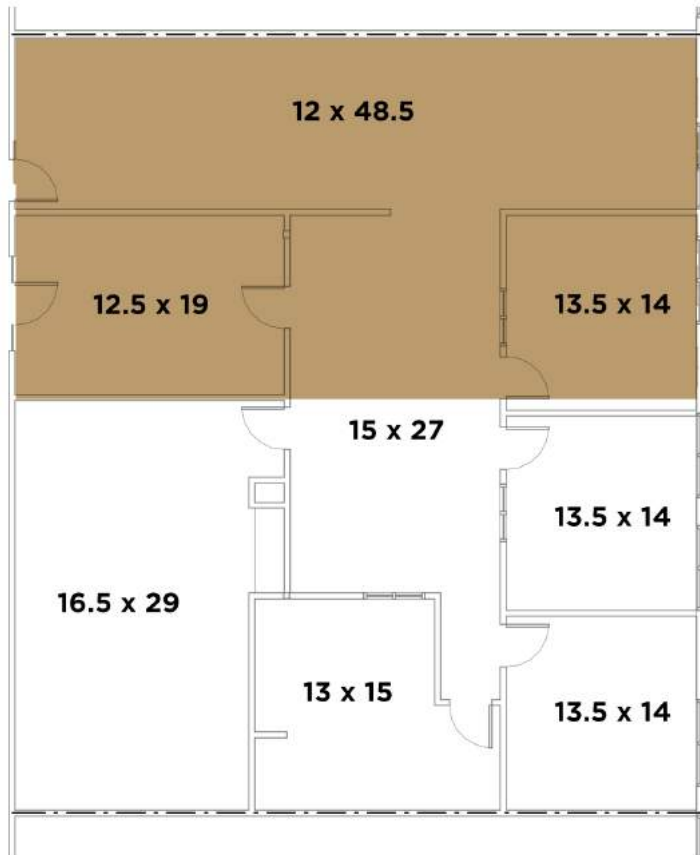
**Jonathan Collins, CCIM**

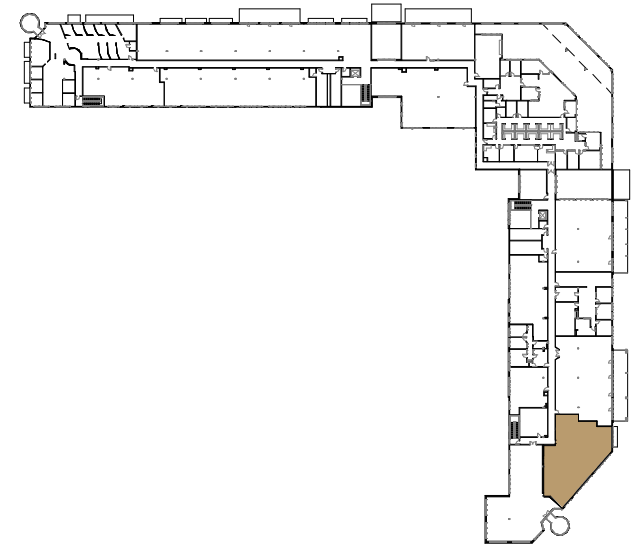
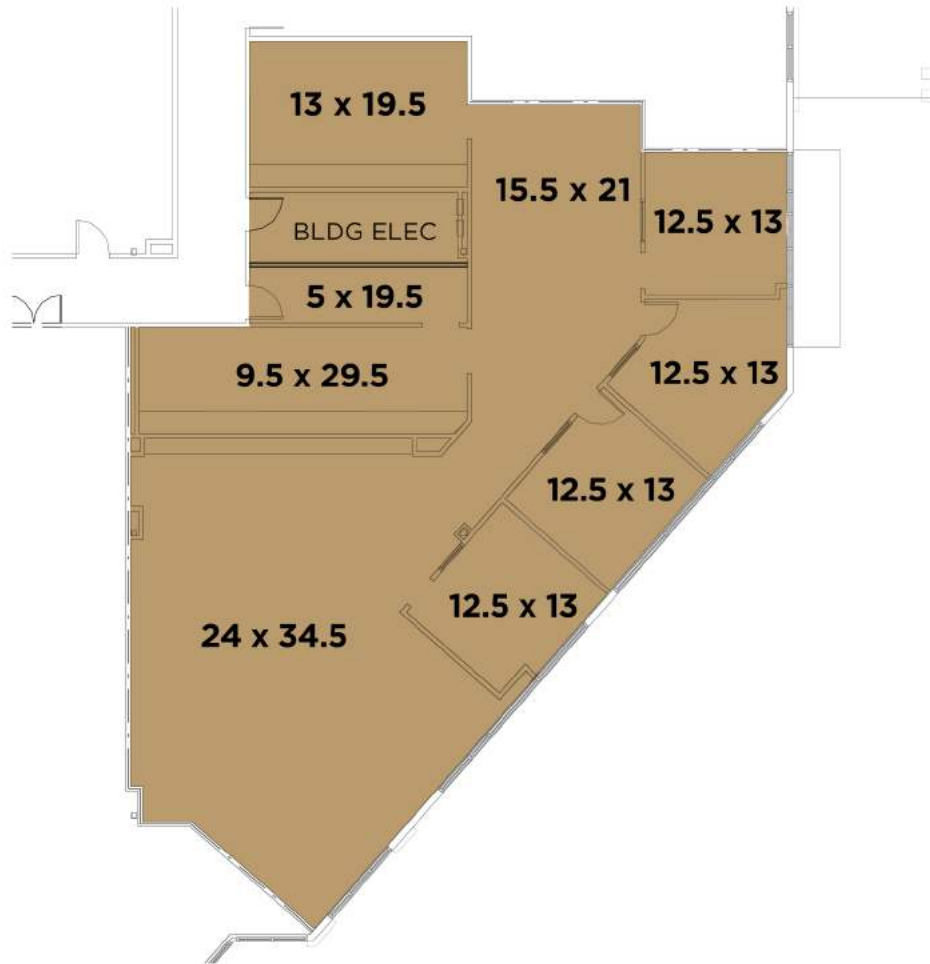
jonathan@valcorcre.com \ \ 210.446.4741

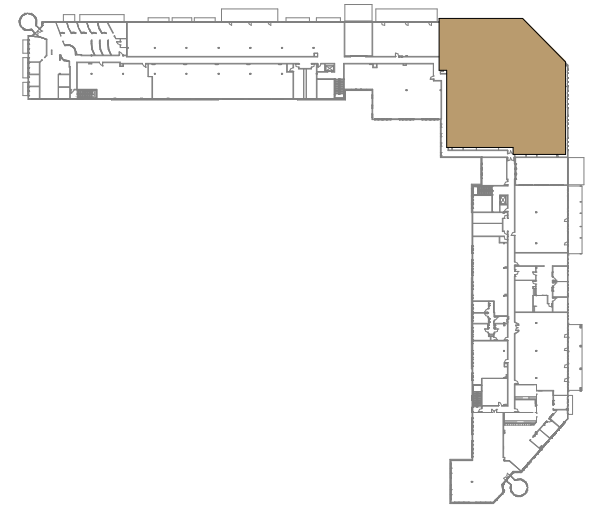
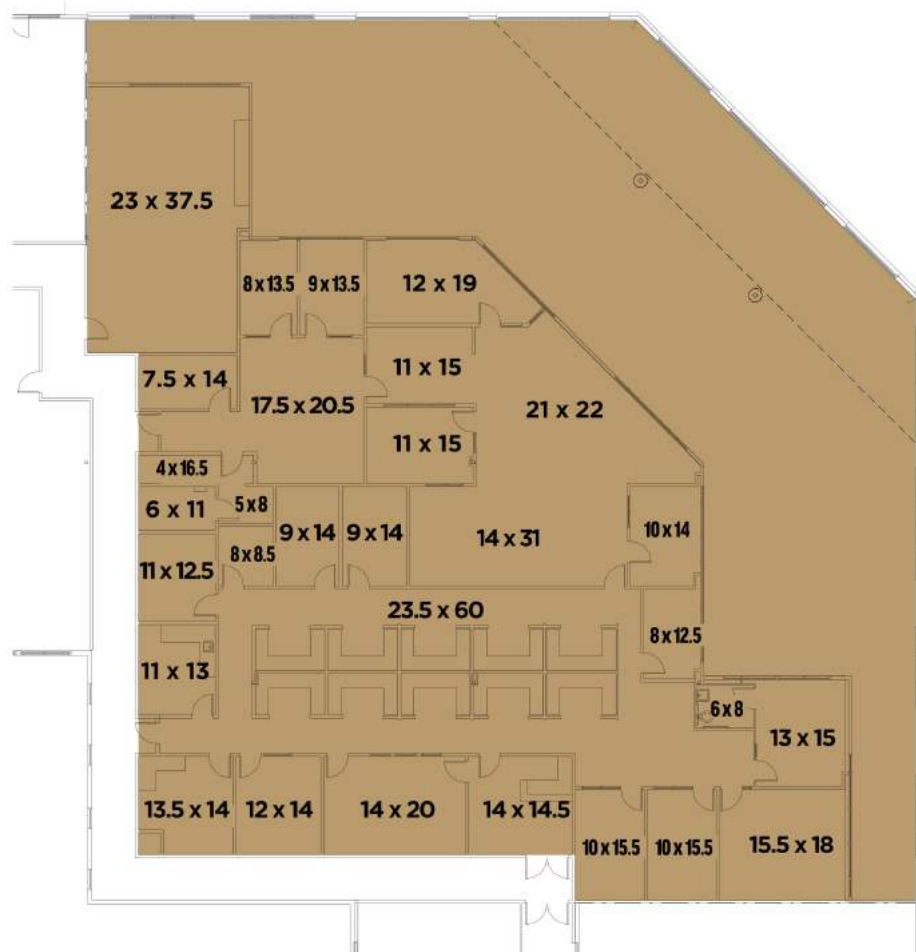












**THE**  
**LEGACY**

· LIVE · WORK · PLAY ·

---

**Jared Davis**

jared@valcorcre.com \ 830.431.2636

**Jonathan Collins, CCIM**

jonathan@valcorcre.com \ 210.446.4741

**VALCOR**